

# BROCHURE

---

# 2 SAFE USE OF PESTICIDES

## INSTRUCTIONS BEFORE APPLICATION



This brochure is made available by the COLEAD to fruit and vegetable producers and exporters in the ACP (Africa, Caribbean, Pacific) countries. The instructions illustrated in the following pages are meant for those who supervise and are responsible for the application of pesticides.

This brochure contains instructions for planning and calibration and environmental protection recommendations. It explains a simple method for determining accurately the volume applied per hectare and the product dosage to be prepared for effective treatment.

Brochures on other subject areas are also available from ([www.colead.link](http://www.colead.link)).

This publication has been developed by the Fit For Market + programme, implemented by COLEAD within the framework of the Development Cooperation between the Organisation of African, Caribbean and Pacific States (OACPS) and the European Union (EU). It should be noted that the information presented does not necessarily reflect the views of the donors.

This publication is part of a collection of COLEAD resources, which consists of online and offline educational and technical tools and materials. All of these tools and methods are the result of more than 20 years of experience and have been developed progressively through COLEAD's technical assistance programmes, notably in the framework of development cooperation between the OACPS and the EU.

The use of particular designations of countries or territories does not imply any judgement on the part of COLEAD concerning the legal status of these countries or territories, their authorities and institutions or the delimitation of their frontiers.

The content of this publication is provided in a «currently available» form. COLEAD makes no warranty, direct or implied, as to the accuracy, completeness, reliability or suitability of the information at a later date. COLEAD reserves the right to change the content of this publication at any time without notice. The content may contain errors, omissions or inaccuracies, and COLEAD cannot guarantee the accuracy or completeness of the content.

COLEAD cannot guarantee that the content of this publication will always be current or suitable for any particular purpose. Any use of the content is at the user's own risk and the user is solely responsible for the interpretation and use of the information provided.

COLEAD accepts no liability for any loss or damage of any kind arising from the use of, or inability to use, the content of this publication, including but not limited to direct, indirect, special, incidental or consequential damages, loss of profits, loss of data, loss of opportunity, loss of reputation, or any other economic or commercial loss.

This publication may contain hyperlinks. Links to non-COLEAD sites/platforms are provided solely for the information of COLEAD staff, its partner-beneficiaries, its funders and the general public. COLEAD cannot and does not guarantee the authenticity of information on the Internet. Links to non-COLEAD sites/platforms do not imply any official endorsement of, or responsibility for, the opinions, ideas, data or products presented on those sites, or any guarantee as to the validity of the information provided.

Unless otherwise stated, all material contained in this publication is the intellectual property of COLEAD and is protected by copyright or similar rights. As this content is compiled solely for educational and/or technical purposes, the publication may contain copyrighted material, the further use of which is not always specifically authorised by the copyright owner.

Mention of specific company or product names (whether or not indicated as registered) does not imply any intention to infringe proprietary rights and should not be construed as an endorsement or recommendation by COLEAD.

This publication is publicly available and may be freely used provided that the source is credited and/or the publication remains hosted on one of COLEAD's platforms. However, it is strictly forbidden for any third party to state or imply publicly that COLEAD is participating in, or has sponsored, approved or endorsed the manner or purpose of the use or reproduction of the information presented in this publication, without prior written consent from COLEAD. The use of the contents of this publication by any third party does not imply any affiliation and/or partnership with COLEAD.

Similarly, the use of any COLEAD trademark, official mark, official emblem or logo, or any other means of promotion or advertising, is strictly prohibited without the prior written consent of COLEAD. For more information, please contact COLEAD at [network@colead.link](mailto:network@colead.link)





## INTRODUCTION

The purpose of this brochure is to provide guidance to producers on how to use the right equipment and to prepare the pesticide spraying mixture with the correct calculated dose rate before applying the pesticide on the crop when conditions are right for spraying.

It is important for the operators to protect themselves effectively during preparation of the mixture, which is the operation where the risk of contamination and poisoning is highest.

You will find in this brochure the instructions to be observed to avoid contamination and to work safely.

## LIST OF INSTRUCTIONS TO BE OBSERVED BEFORE APPLICATION

### CHOOSE THE RIGHT TIME

1. Do not spray on a very windy day.
2. Do not spray when it is raining or if it might rain.
3. If possible, spray during the cooler hours of the day (early morning or late afternoon).

### USE PROPER EQUIPMENT

1. Wear clothing that covers the entire body and that is used only for spraying pesticides. Close all zips, etc.
2. Wear a plastic apron to cover the front of the body.
3. Do not wear clothing with tears, holes or is damaged.
4. Never work with bare hands: wear strong gloves that are impermeable to pesticides (made of nitrile or neoprene).
5. Wear boots that are free of holes and place the trouser legs over the boots.
6. Wear a face protector or safety goggles when preparing the mixture.

### PREPARE THE SPRAYING EQUIPMENT

1. Use a sprayer in good working order (that does not leak).
2. If the nozzle is blocked, use a flexible tool to unblock (twig, brush, etc., but never a nail).
3. Never blow into the nozzle to unblock.

### PREPARE THE MIXTURE.

1. Wear the protective equipment shown on the pesticide label.
2. Follow the dose rate recommended on the label.
3. Use containers and tools specifically allocated for use with pesticides.
4. Use tools which allow you to measure small volumes accurately.
5. Use sticks to stir the mixture.
6. Never stir the mixture with the hands.
7. When mixing powders, try to keep from releasing a cloud of dust.
8. Work at a distance from wells or water supplies.

9. Use gentle movements to avoid splashes.
10. Have a supply of clean water available (for rinsing, in case the pesticide contaminates the eyes).
11. Avoid touching the face or mouth.
12. Do not drink, smoke or eat.

## CLEAN AND PUT AWAY THE MEASURING EQUIPMENT

1. Always pour the water used to rinse the equipment and empty packaging into the sprayer tank.
2. Wash containers and measuring equipment immediately after use.
3. Put away the measuring equipment and cans in the store-room, under lock and key, immediately after preparation.

## CHOOSE THE RIGHT TIME

---



- Do not spray on a very windy day.



- Do not spray when it is raining or if it might rain.



- If possible, spray during the cooler hours of the day (early morning or late afternoon).



## USE PROPER EQUIPMENT

---



- Wear clothing that covers the entire body and that is used only for spraying pesticides. Close all zips, etc.



- Wear a plastic apron to cover the front of the body.



- Do not wear clothing with tears, holes or is damaged.

## USE PROPER EQUIPMENT

---



- Never work with bare hands: wear strong gloves that are impermeable to pesticides (made of nitrile or neoprene).



- Wear boots that are free of holes and place the trouser legs over the boots.



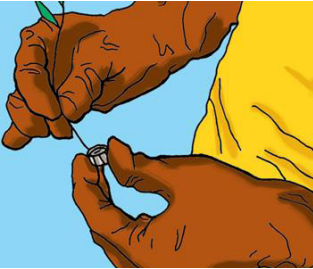
- Wear a face protector or safety goggles when preparing the mixture.

## PREPARE THE SPRAYING EQUIPMENT

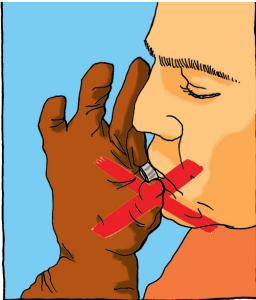
---



- Use a sprayer in good working order (that does not leak).



- If the nozzle is blocked, use a flexible tool to unblock (twig, brush, etc., but never a nail).



- Never blow into the nozzle to unblock.

## PREPARE THE MIXTURE

---



- Wear the protective equipment shown on the pesticide label.



- Follow the dose rate recommended on the label.



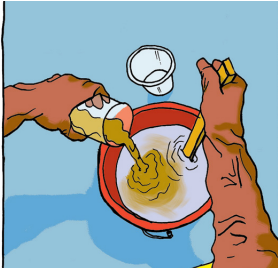
- Use containers and tools specifically allocated for use with pesticides.

## PREPARE THE MIXTURE

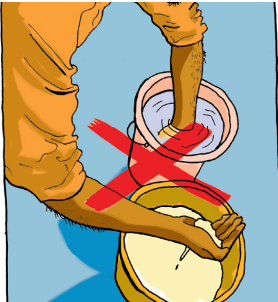
---



- Use tools which allow you to measure small volumes accurately.



- Use sticks to stir the mixture.



- Never stir the mixture with the hands.

## PREPARE THE MIXTURE

---



- When mixing powders, try to keep from releasing a cloud of dust.



- Work at a distance from wells or water supplies.



- Use gentle movements to avoid splashes.

## PREPARE THE MIXTURE

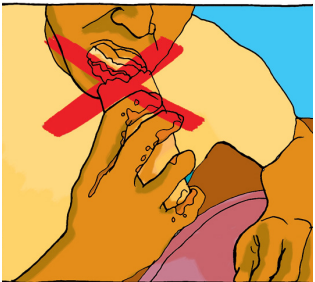
---



- Have a supply of clean water available (for rinsing, in case the pesticide contaminates the eyes).



- Avoid touching the face or mouth.



- Do not drink, smoke or eat.

## CLEAN AND PUT AWAY THE MEASURING EQUIPMENT

---



- Always pour the water used to rinse the equipment and empty packaging into sprayer tank.



- Wash containers and measuring equipment directly after use.



- Put away the measuring equipment and cans in the store-room, under lock and key, immediately after preparation.



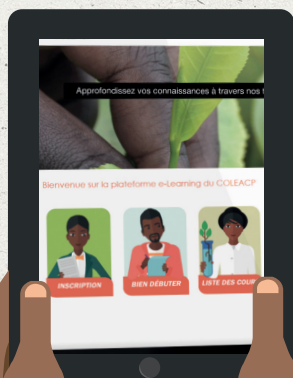
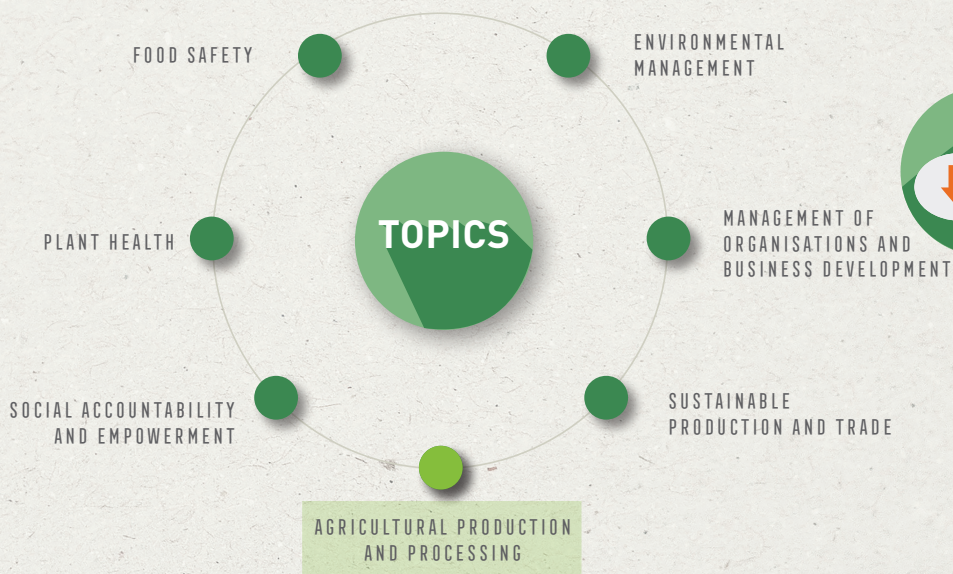




# COLEAD E-LEARNING PLATFORM

RECEIVE YOUR ACCESS TO OUR DISTANCE LEARNING PLATFORM. RESERVED FOR STAKEHOLDERS IN THE AGRICULTURAL SECTOR IN AFRICAN, CARIBBEAN AND PACIFIC COUNTRIES.

TEST AND IMPROVE YOUR KNOWLEDGE  
AT YOUR OWN RHYTHM!



<https://training.colead.link>



# COLEAD

**SUSTAINABLE PRODUCTION  
AND TRADE**

**SOCIAL ACCOUNTABILITY  
AND EMPOWERMENT**

**PLANT HEALTH**

**ENVIRONMENTAL  
MANAGEMENT**

**FOOD SAFETY**

**BUSINESS MANAGEMENT  
AND DEVELOPMENT**

**AGRICULTURAL PRODUCTION  
AND PROCESSING**

**TRAINING  
METHODOLOGY**